

NEW



IN-YACHT NEWSLETTER

by In-Yacht Team - April 2023

Help

Interactive guide

a help to get hints on software functionalities



E-mail notifications

on payments notices, ISM procedures and more



Hours of Rest

New interface to better manage Work and Rest hours



Crew member invitations

to get new crew information in a direct and easy way



Storage inventory

a new feature to easily keep updated your inventory

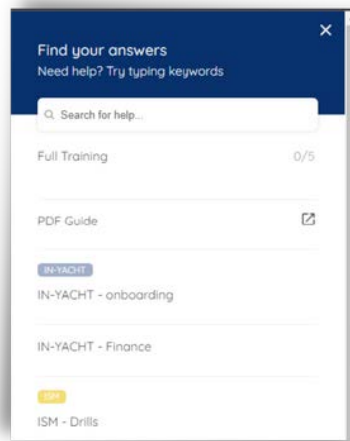
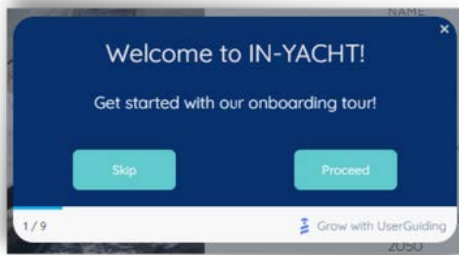


Measure

Keep track of the trends and sparkline of your measures

Thanks to your feedbacks we constantly improve our platform.
Now handling your yacht's activities is even smarter!

Help Interactive guide

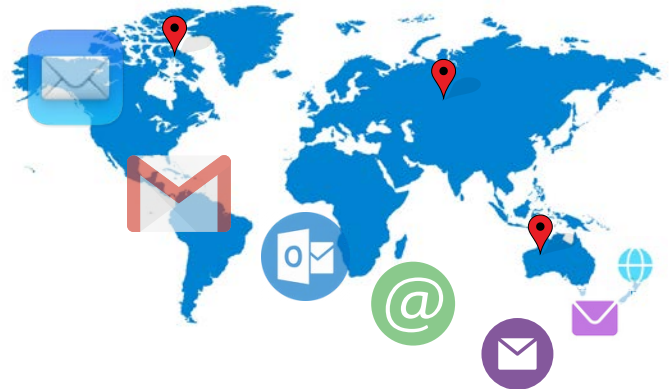


Any problems? Just **click on Help** on the right!

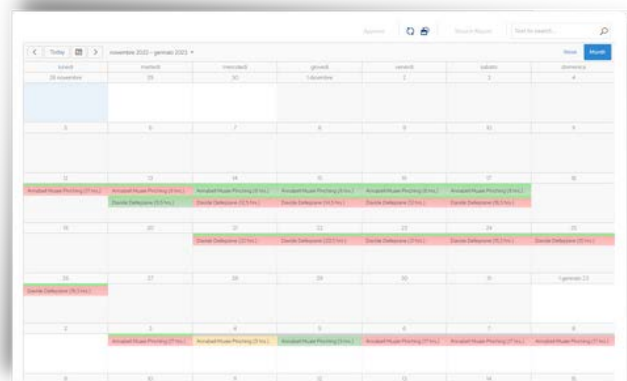
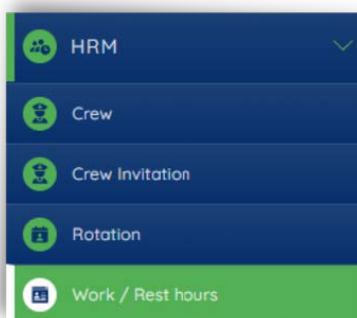
A drop-down menu will appear, guiding you and explaining the functionalities and modules of the software. Simply press Proceed to continue with the Help, Skip or click on the (x) on the right to exit.

Notifications by email

Aside from notifying you inside the software this new system will also send you an **automatic email** when an expense is made, a crew member invitation is submitted or when you upload/approve documents. To enable it just go to **My profile**, here you'll have to specify your email and activate the workflow subscription you are interest in.



Work / Rest hours

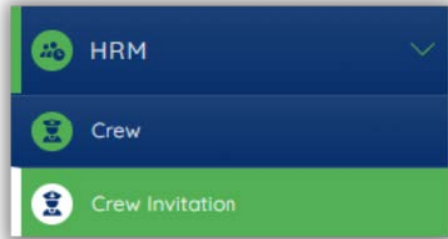


A new interface to easily manage work and rest hours of the crew, in conformity with **Maritime Labour Convention guidelines, ILO (2006)**.

Crew members will update their work schedule, and Captain (or the officer in charge) will be able to check, manage any non-compliance and approve them.



Crew members invitations



Crew Member Invitation
david

PERSONAL INFO

EMAIL*
name.surname@gmail.com

FIRST NAME*
[input field]

LAST NAME*
[input field]

DATE OF BIRTH*
01/01/2001

HOME ADDRESS*
ITALY - Genova

HOME TELEPHONE
[input field]

MOBILE NUMBER*
123

SUBMIT

Form to be filled out from Crew member, after a Captain invitation. The Crew will receive it via email

In this new section, Captain will be able to handle **new crew member information**, inviting them to **fill in a form** with personal information, passport, bank account, medical matters, type of contract and so on. Keep track of the status of the onboarding process and receive notification when the form is filled or approved.

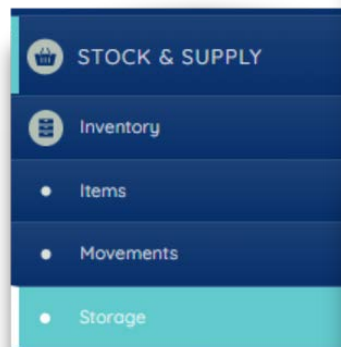


Storage inventory

In the storage section you can easily **manage your inventory**.

Here you can select the storage location you are interested in and start **updating the quantity of each item** with few clicks.

You will also have access to the map to see where your stock is located.



Location Inventory + NEW

STORAGE:
Gym

STORAGE LEVEL

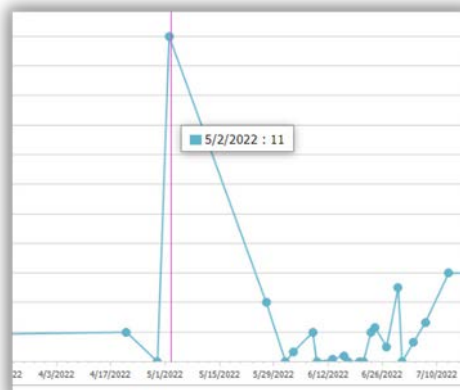
+ NEW [trash] [lock] [share] [more]

	ITEM NAME ▾	REAL QUANTITY ▾
<input type="checkbox"/>	ITEM A	[input field]
<input type="checkbox"/>	ITEM B	9.00



Measure

From now on monitoring the measures will also allow you to check the history through an interactive graphic. This will allow you to have an overview of your measures' sparkline and trends.



Thanks for your attention and feedbacks!
For more details write us to support@in-yacht.com